


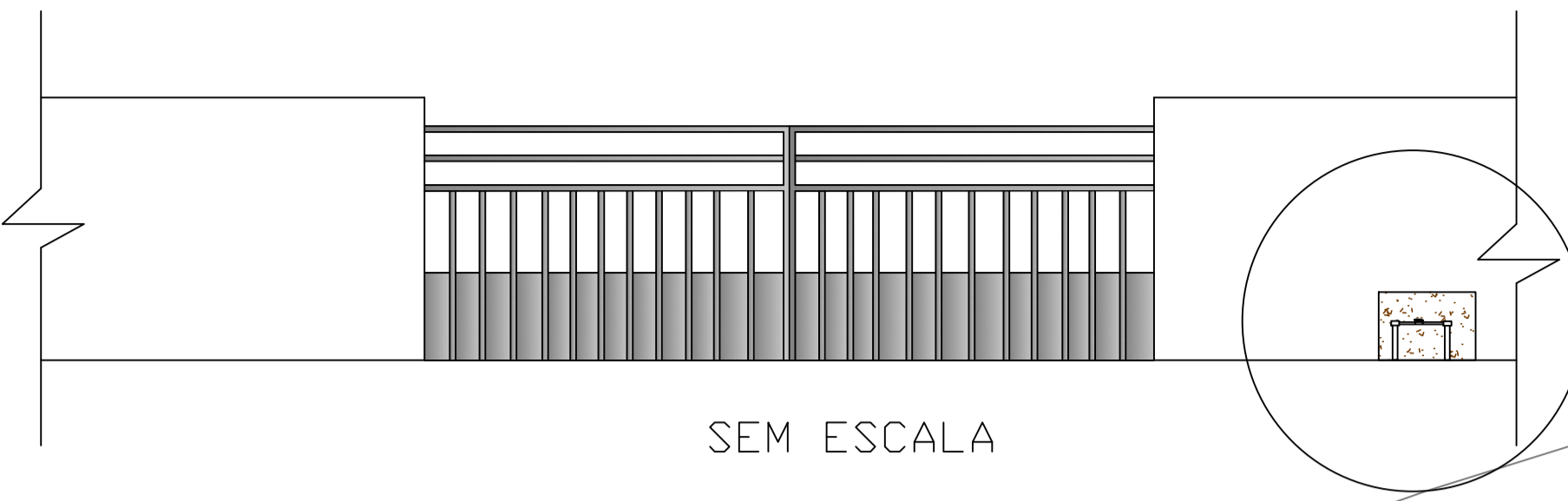
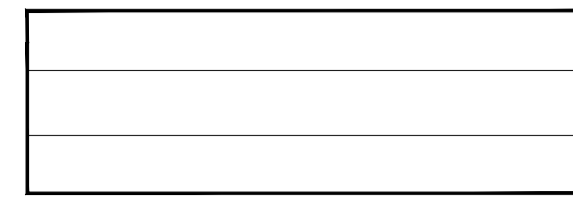


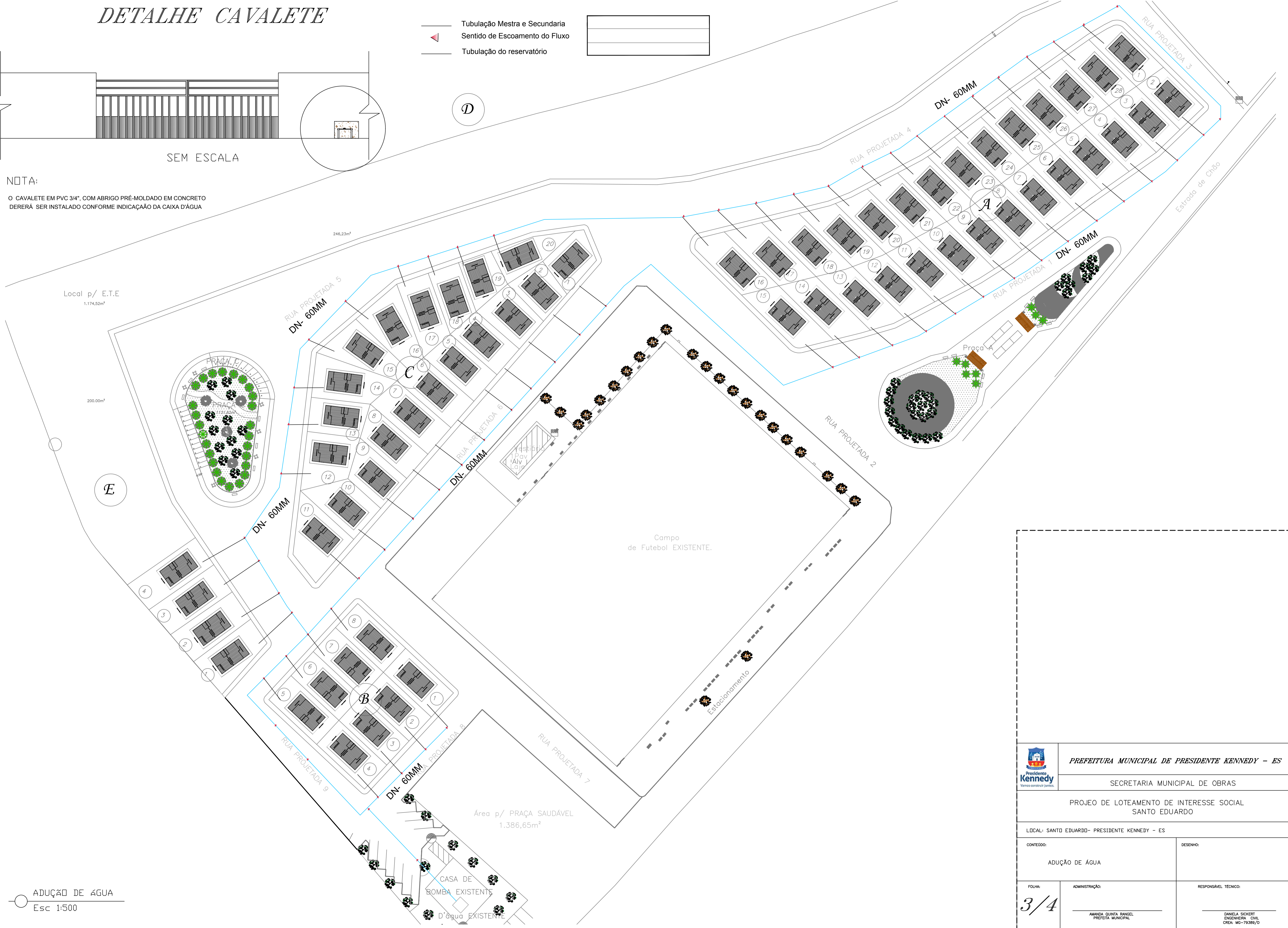
# DETALHE CAVALETE


-  Tubulação Mestra e Secundaria
-  Sentido de Escoamento do Fluxo
-  Tubulação do reservatório



## NOTA:

O CAVALETE EM PVC 3/4", COM ABRIGO PRÉ-MOLDADO EM CONCRETO DEVERÁ SER INSTALADO CONFORME INDICAÇÃO DA CAIXA D'ÁGUA



 <b>PREFEITURA MUNICIPAL DE PRESIDENTE KENNEDY - ES</b>		
SECRETARIA MUNICIPAL DE OBRAS		
PROJETO DE LOTEAMENTO DE INTERESSE SOCIAL SANTO EDUARDO		
LOCAL: SANTO EDUARDO - PRESIDENTE KENNEDY - ES		
CONTEÚDO:	DESENHO:	
ADUÇÃO DE ÁGUA		
FOLHA:	ADMINISTRAÇÃO:	RESPONSÁVEL TÉCNICO:
3/4	AMANDA QUINTA RANGEL PREFEITA MUNICIPAL	DANIELA SICKERT ENGENHEIRA CIVIL CREA: MG-79389/D