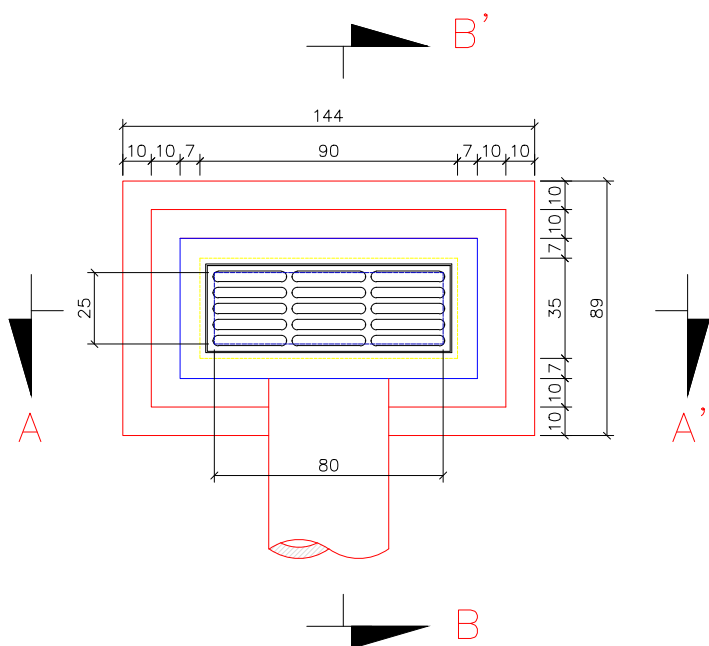
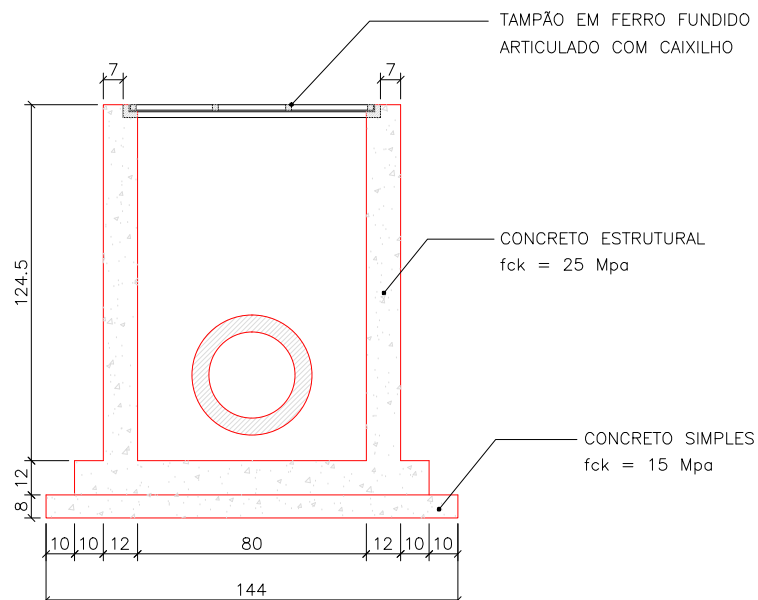


CAIXA RALO – ARMADA

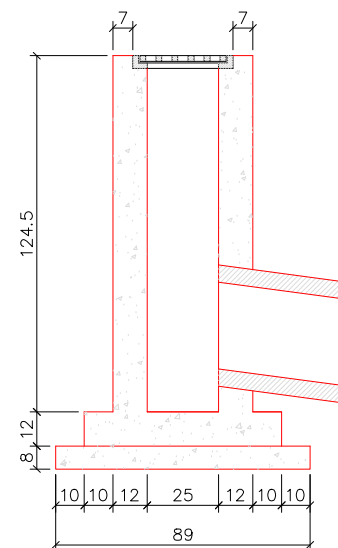
PLANTA



CORTE AA'



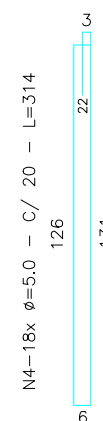
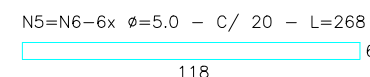
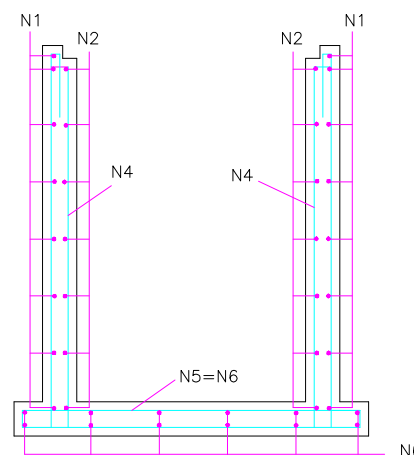
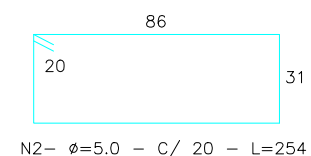
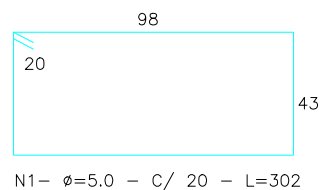
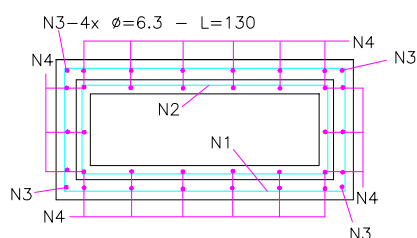
CORTE BB'



CONSUMOS BÁSICOS P/ CONSTRUÇÃO DE 01 UNIDADE

Escavação	m3	3,60
Reaterro	m3	2,90
Regulariz. Manual	m2	1,30
Formas	m2	9,16
Aço CA – 50	Kg	24,00
Concreto Simples 15 Mpa	m3	0,17
Concreto Estrut. 25 Mpa	m3	0,60
TAMPÃO COM CAIXILHO	UNID	1,00

ARMAÇÃO



RESUMO DA ARMAÇÃO

POS	ϕ	QUANT.	ESP.(cm)	COMP.(m)
N1	5.0	08	20,00	3,02
N2	5.0	07	20,00	2,54
N3	6.3	04	-	1,30
N4	5.0	18	20,00	3,14
N5	5.0	06	20,00	2,68
N6	5.0	06	20,00	2,68

RESUMO GERAL

ϕ	COMP.(m)	PESO(Kg)
5.0	136,00	22,20
6.3	52,00	1,20
TOTAL		23,40

PREFEITURA MUNICIPAL DE PRESIDENTE KENNEDY - ES

SECRETARIA MUNICIPAL DE OBRAS

PROJETOS TIPO DO LIS (LOTEAMENTO DE INTERESSE SOCIAL)
SANTO EDUARDO

LOCAL: SANTO EDUARDO- PRESIDENTE KENNEDY - ES

CONTEUDO: PROJÉTOS TIPO - CAIXA RALO

FOLHA: 1/1

ADMINISTRAÇÃO: MIGUEL ANGELO LIMA QUALIANO
SECRETÁRIO MUNICIPAL DE OBRAS

RESPONSÁVEL TÉCNICO: CAROLINA LOBATO DOS SANTOS
ENGENHEIRO CIVIL
CREA - ES-31149/D