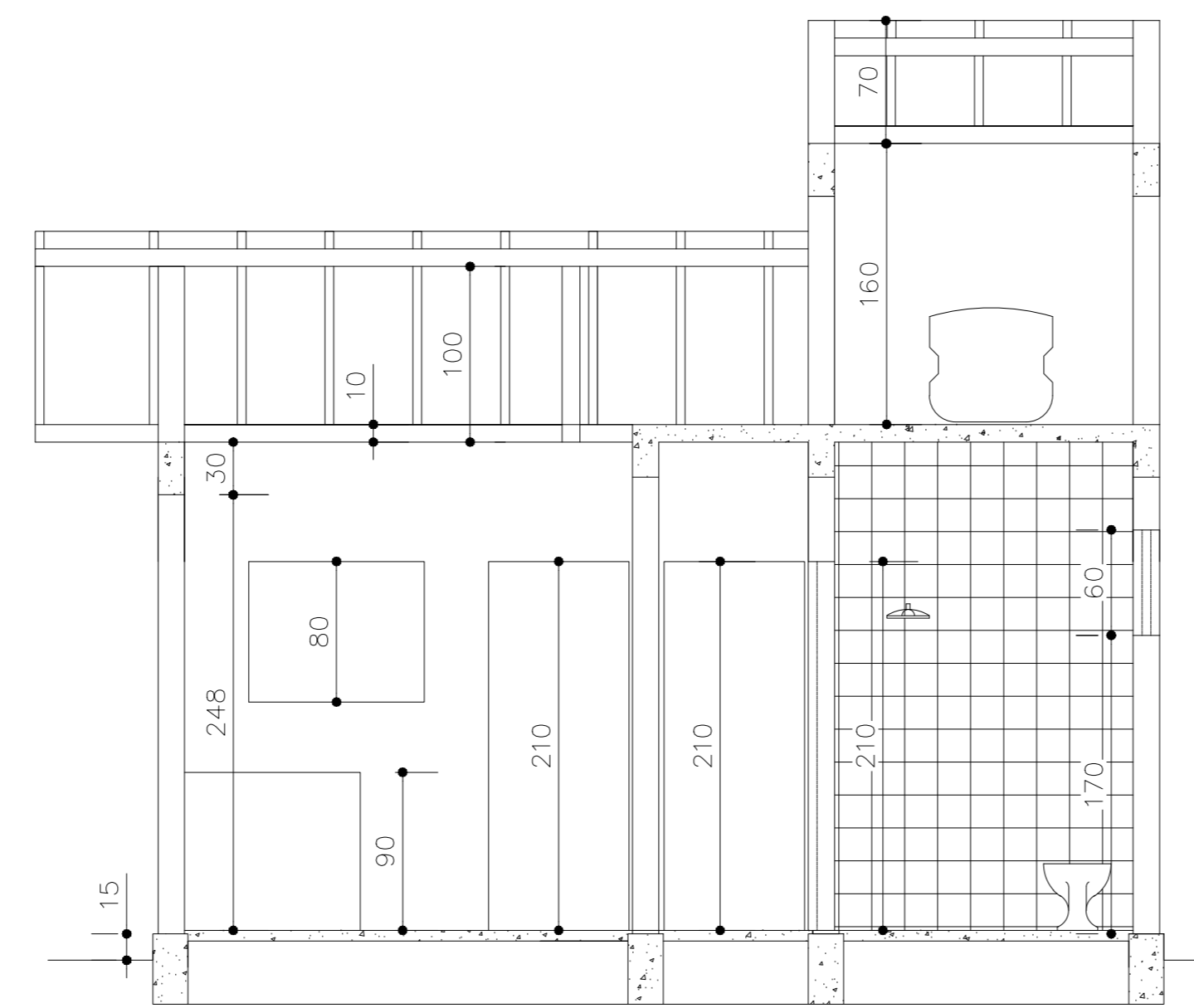
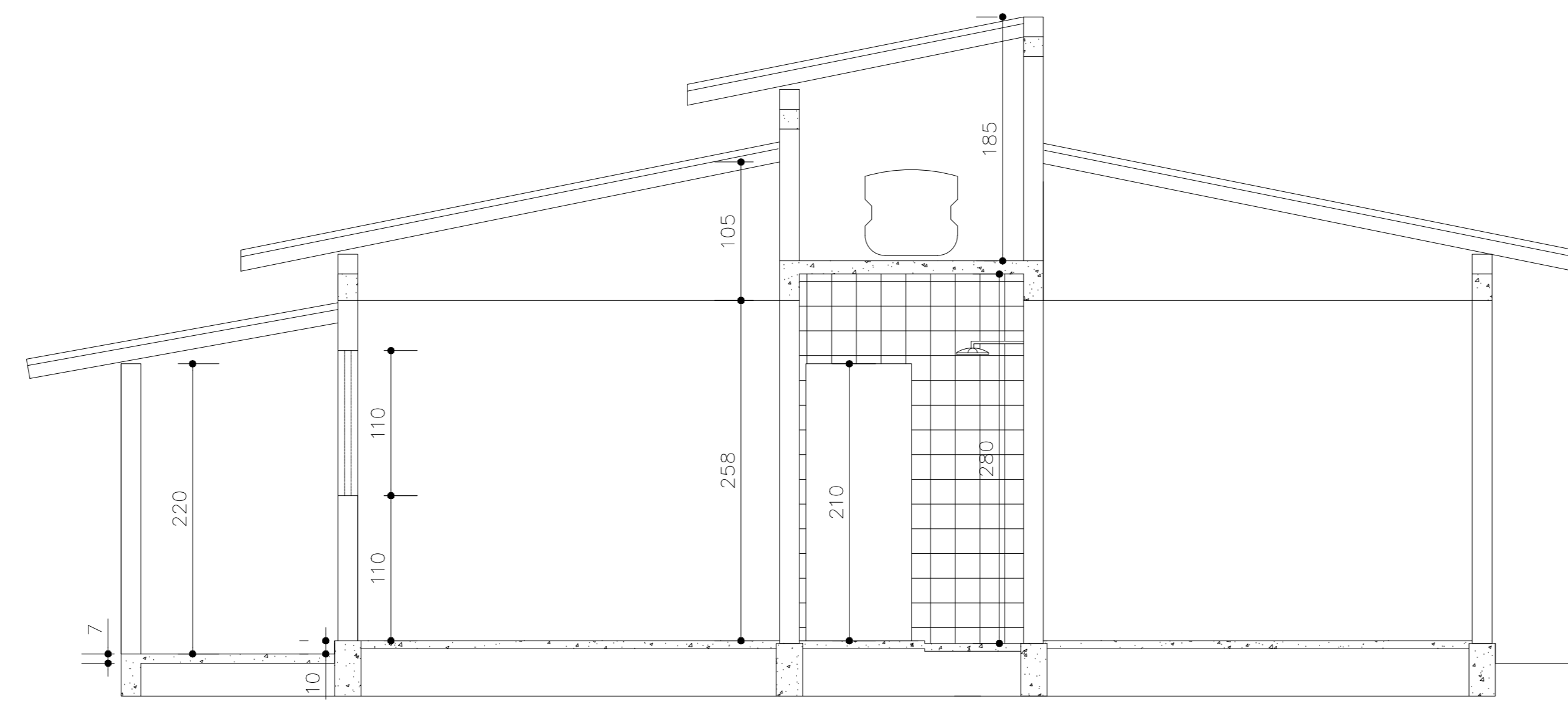


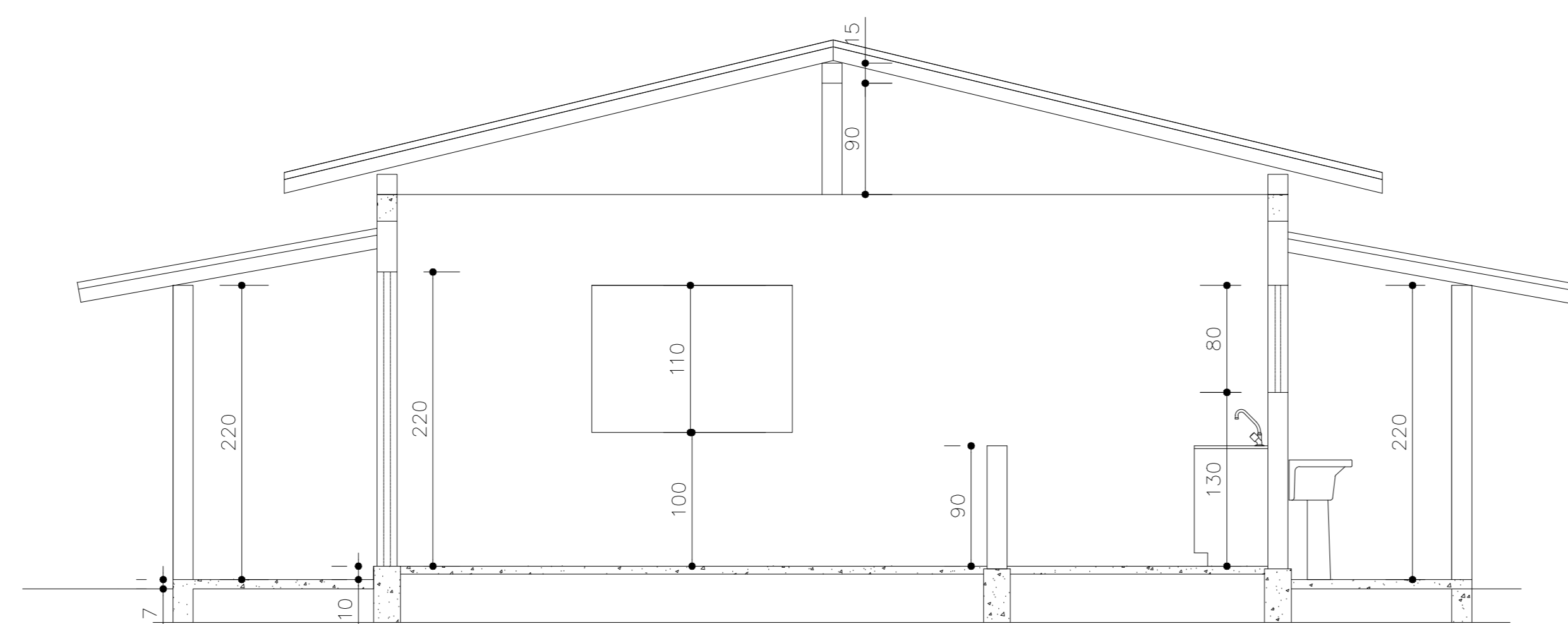
PLANTA BAIXA
A = 59,10 M²
ESCALA 1 : 50



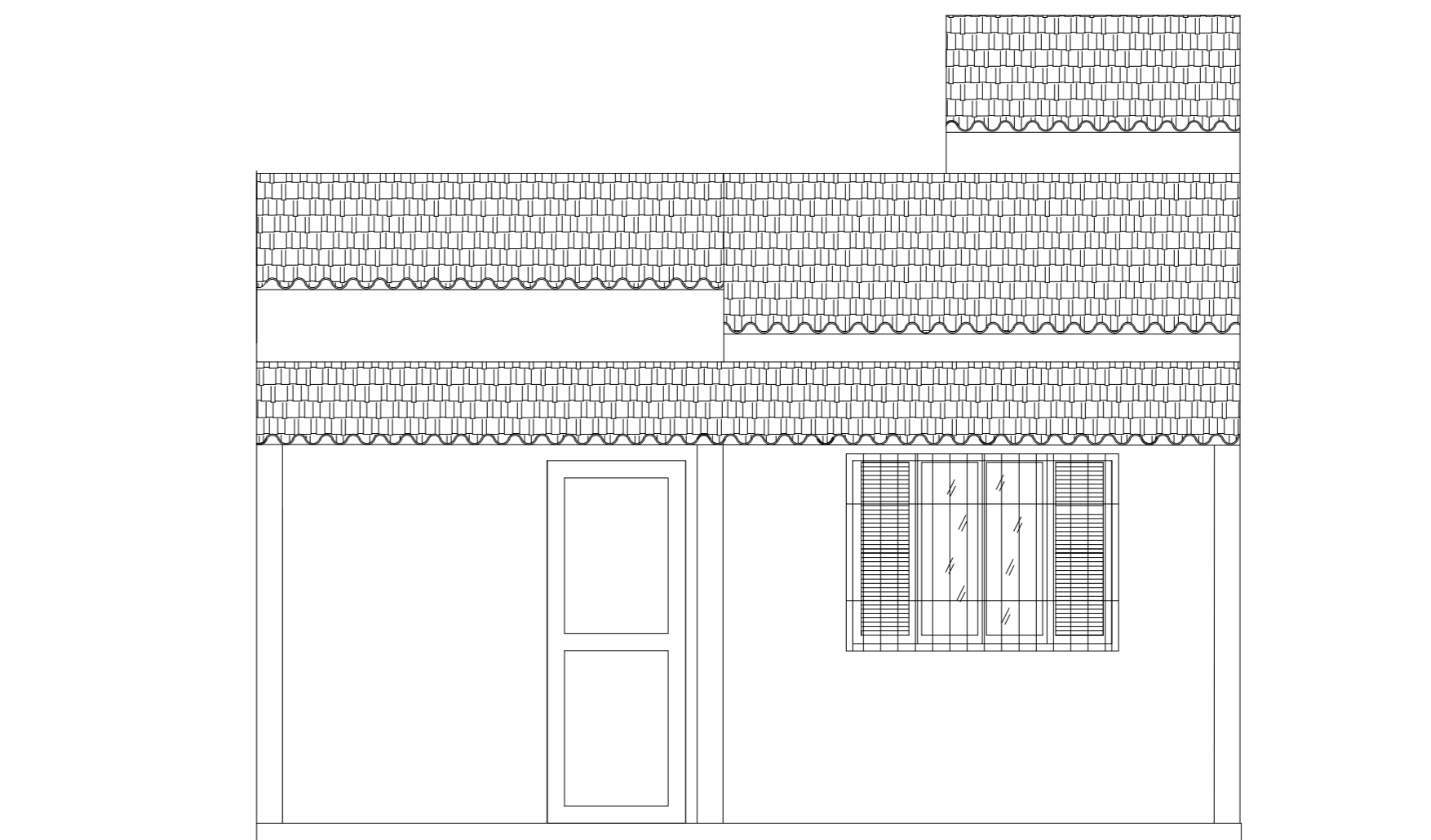
CORTE AA
ESCALA 1 : 50



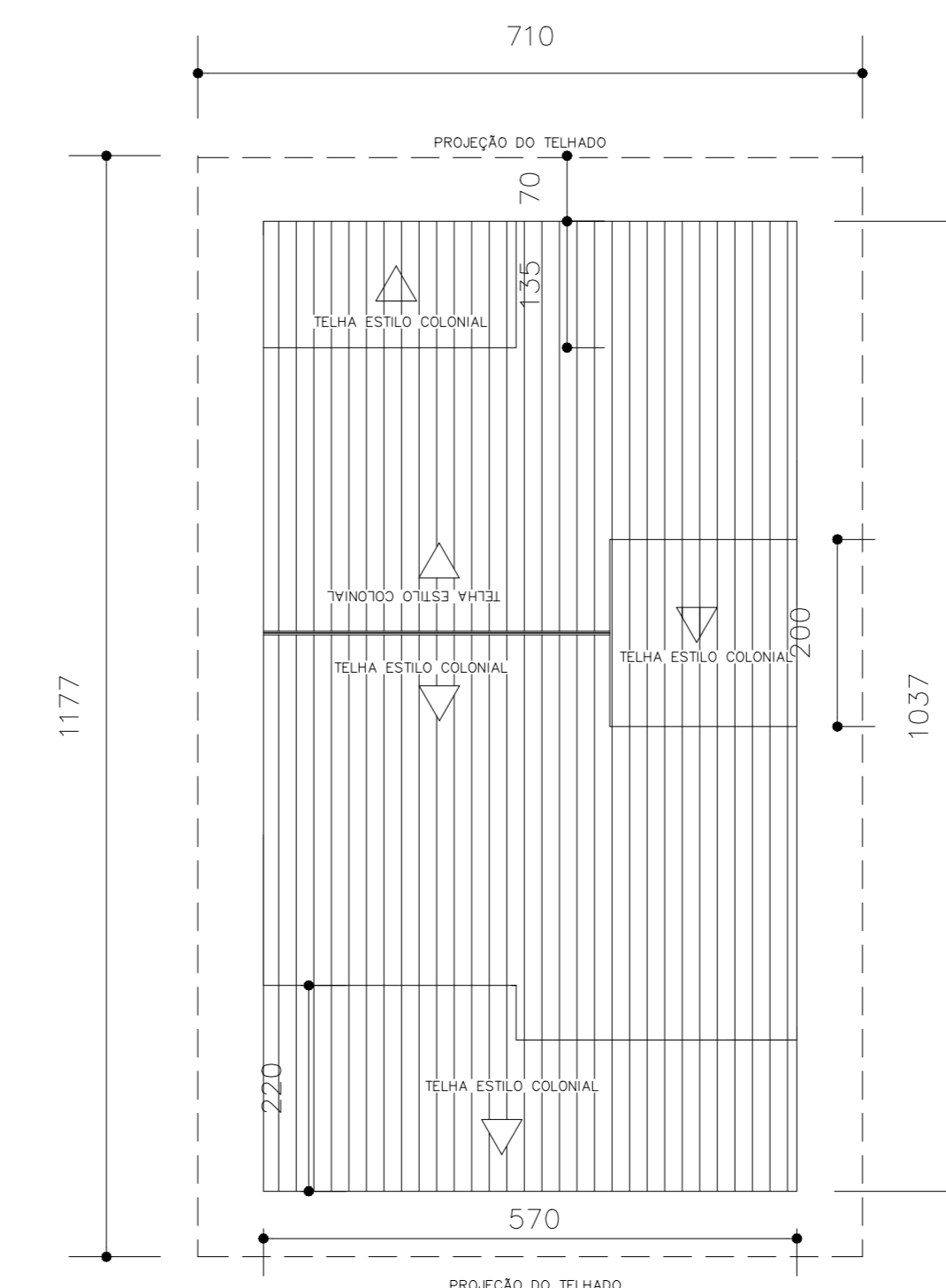
CORTE BB
ESCALA 1 : 50



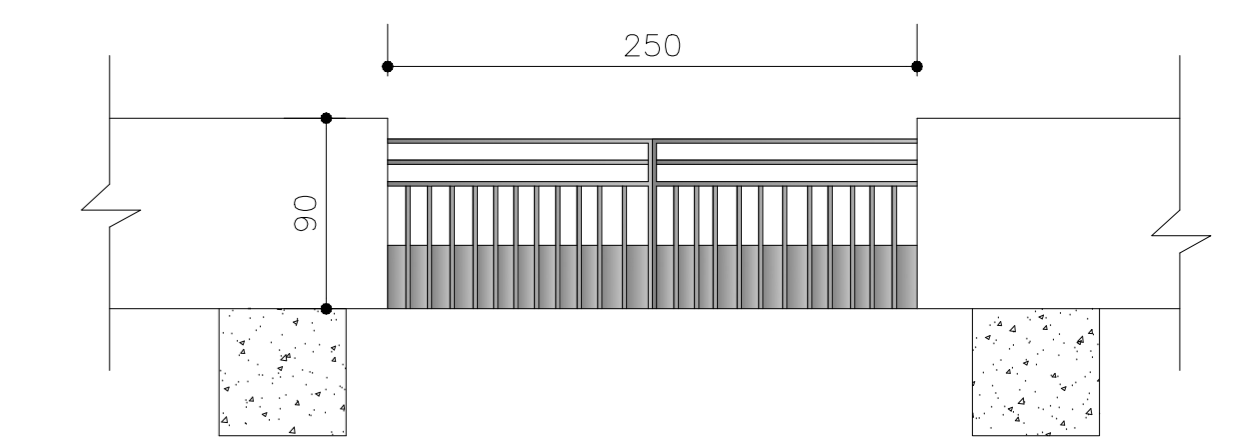
CORTE CC
ESCALA 1 : 50



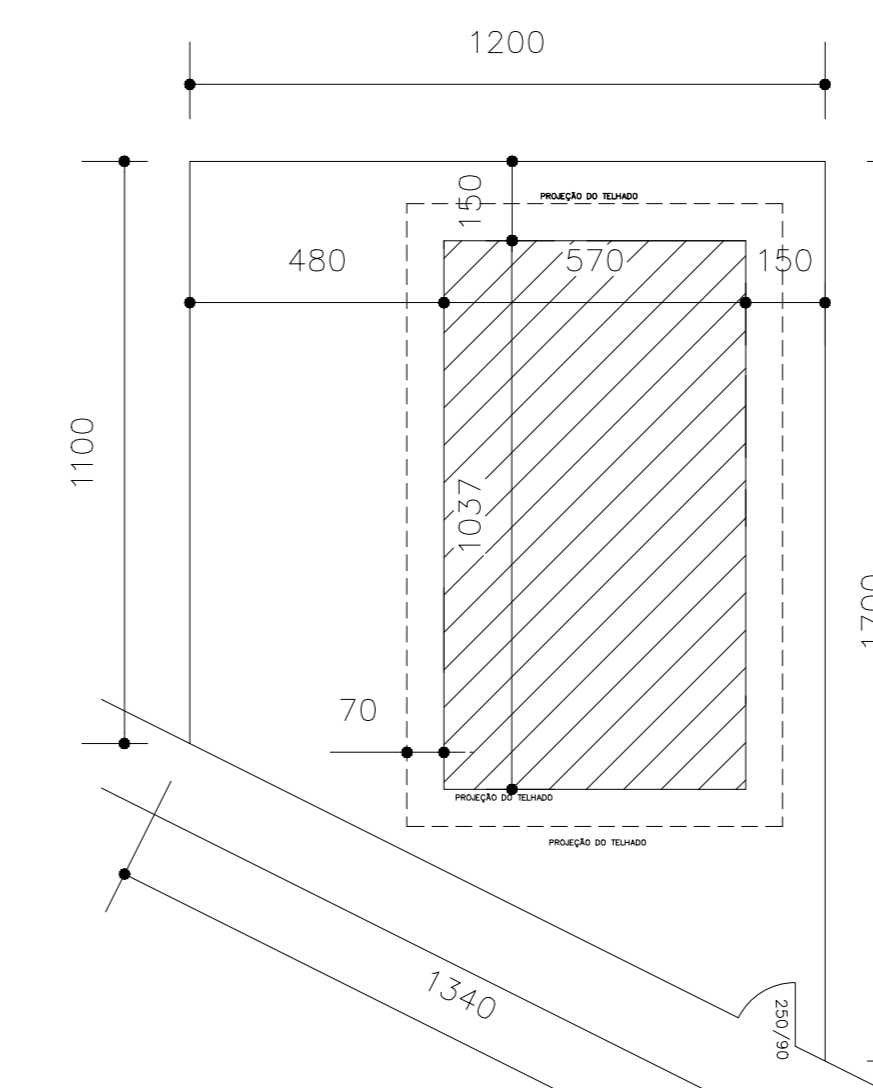
FACHADA




COBERTURA
ESCALA 1 : 100



DETALHE MURO
ESCALA 1 : 50



PLANTA DE SITUAÇÃO
ESCALA 1 : 200

 PREFEITURA MUNICIPAL DE PRESIDENTE KENNEDY - ES	
SECRETARIA MUNICIPAL DE OBRAS	
PROJETO ARQUITETÔNICO PARA CONSTRUÇÃO DE UNIDADE HABITACIONAL POPULAR - LIS (SANTO EDUARDO)	
LOCAL: SANTO EDUARDO - ES	
CONTEÚDO: PLANTA BAIXA, CORTES, FACHADA, PLANTA DE SITUAÇÃO E COBERTURA	DESENHO:
FOLHA: 1/4	RESPONSÁVEL TÉCNICO: CAROLINA LOBATO DOS SANTOS ENGENHEIRA CIVIL CREA: ES-031149/20
ADMINISTRAÇÃO: MIGUEL ANGELO LIMA QUALHAND SECRETÁRIO MUNICIPAL DE OBRAS	